



Department of
Environmental
Conservation

Tonawanda Community Working Group

Superfund and Brownfield Progress Update

May 25, 2022

Brownfield Site

Riverview Innovation &
Technology Campus,
#C915353



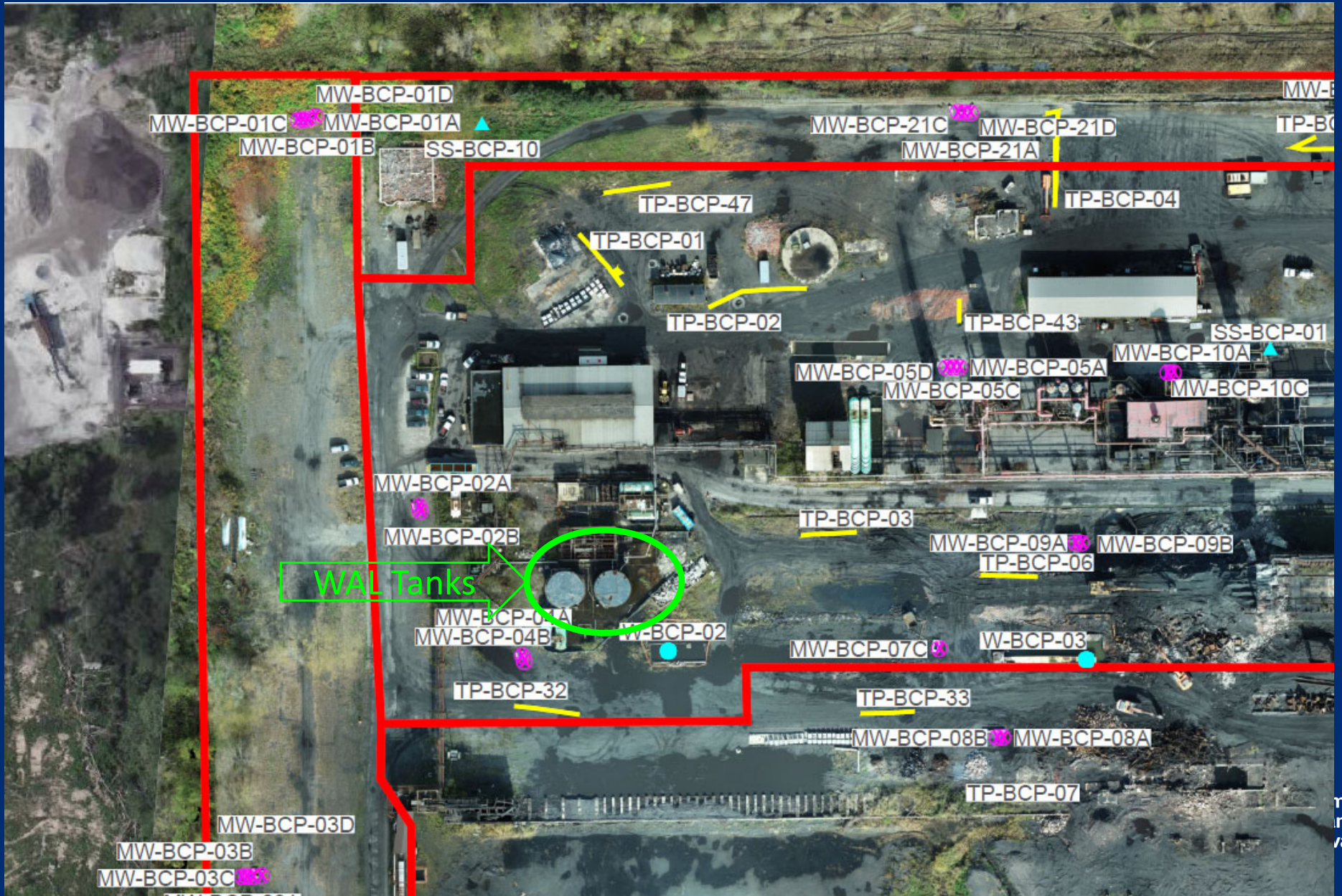
Department of
Environmental
Conservation

Work Plan/Report	Submitted	Status	Progress
Interim Site Management Plan (ISMP)	3/6/2020	DEC Approved	Continuous
Light Oil Area Secondary Containment Investigation Work Plan	3/6/2020	DEC Approved	Complete
Remedial Investigation Work Plan	3/12/2020	DEC Approved	Complete (field)
Stormwater Pollution Prevention Plan	3/12/2020	DEC Approved	Continuous
Storm Sewer IRM Work Plan	4/12/2020	DEC Approved	Complete
Mixing Pad IRM Work Plan	5/5/2020	DEC Approved	Complete
PCC Excavation Work Plan	5/11/2020	DEC Approved	Complete
ISMP - Work Scope 2	5/11/2020	DEC Approved	Complete
Container Management IRM Work Plan	6/17/2020	DEC Approved	Complete
ISMP - Work Scope 3	7/6/2020	DEC Approved	Complete
Storm Sewer IRM Phase 1 Report	8/5/2020	DEC Approved	Complete
Abandoned Pipeline IRM Work Plan	8/19/2020	DEC Approved	Complete
PCC Grading Concept Plan	9/10/2020	DEC Approved	Complete
South Road Reconstruction Plan	11/17/2020	DEC Approved	Complete
Surface Water Phase 3 Work Plan	12/22/2020	DEC Approved	Complete

Work Plan/Report	Submitted	Status	Progress
AST Management Work Plan	12/23/2020	DEC Approved	Ongoing
Abandoned Pipeline IRM Report	1/20/2021	DEC Approved	Complete
Building Demolition Work Plan	1/26/2021	DEC Approved	Ongoing
PBS/CBS Tank Work Plan	2/15/2021	DEC Approved	Ongoing
Access to Coal Breaker Building	2/15/2021	DEC Approved	Complete
Secondary Containment Investigation Work Plan	3/10/2021	DEC Approved	Ongoing
Box Culvert Lining Work Plan	4/2/2021	DEC Approved	Complete
Supplemental Remedial Investigation	5/28/2021	DEC Approved	Complete (field)
Mixing Pad Cleaning Completion Report	6/21/2021	DEC Approved	Complete
Byproducts Pipe Sealing Work Plan	6/30/2021	DEC Approved	Complete
Concrete Settling Pond Cleaning	6/30/2021	DEC Approved	Complete
Lime Still IRM Work Plan	7/14/2021	DEC Approved	Field Work Complete
Coke Oven Gas Bench Scale Testing	8/13/2021	DEC Approved	Complete
PFAS Sampling Work Plan	8/19/2021	DEC Approved	Complete
COG Pipe and Residual IRM Work Plan	8/25/2021	DEC Approved	Ongoing
Groundwater Treatment Plant IRM	10/5/2021	DEC Approved	Ongoing

Work Plan/Report	Submitted	Status	Progress
Groundwater Treatment Plant IRM – Addendum	2/15/2022	DEC Approved	Ongoing
Remedial Investigation Report (RIR)	3/11/2022	DEC Review	Ongoing
Process Equipment Removal IRM WP	4/14/2022	DEC Review	Pending

Everyday a New Adventure



ment of
mental
vation

Everyday a New Adventure



Everyday a New Adventure



Everyday a New Adventure

- Tar seeps have been known since March 2020 in WAL secondary containment.
- Seeps will be investigated/remediated according to the *Secondary Containment Work Plan* (May 2021).
- Downgradient wells MW-BCP-02A and MW-BCP-04A do not exhibit NAPL.
- Increased amount of tar is not necessarily a problem. Point is that the understanding of the site continues to grow and shift as additional IRMs and observations are made.

Superfund Site

Tonawanda Coke, #915055



Investigation Status

Site 108:

- Supplemental investigation work plan due May 27, 2022.

Site 109:

- Remedial Investigation Report received by DEC on April 11, 2022.

Site 110:

- Remedial Investigation Report received by DEC on April 11, 2022.

SSF Site Overview

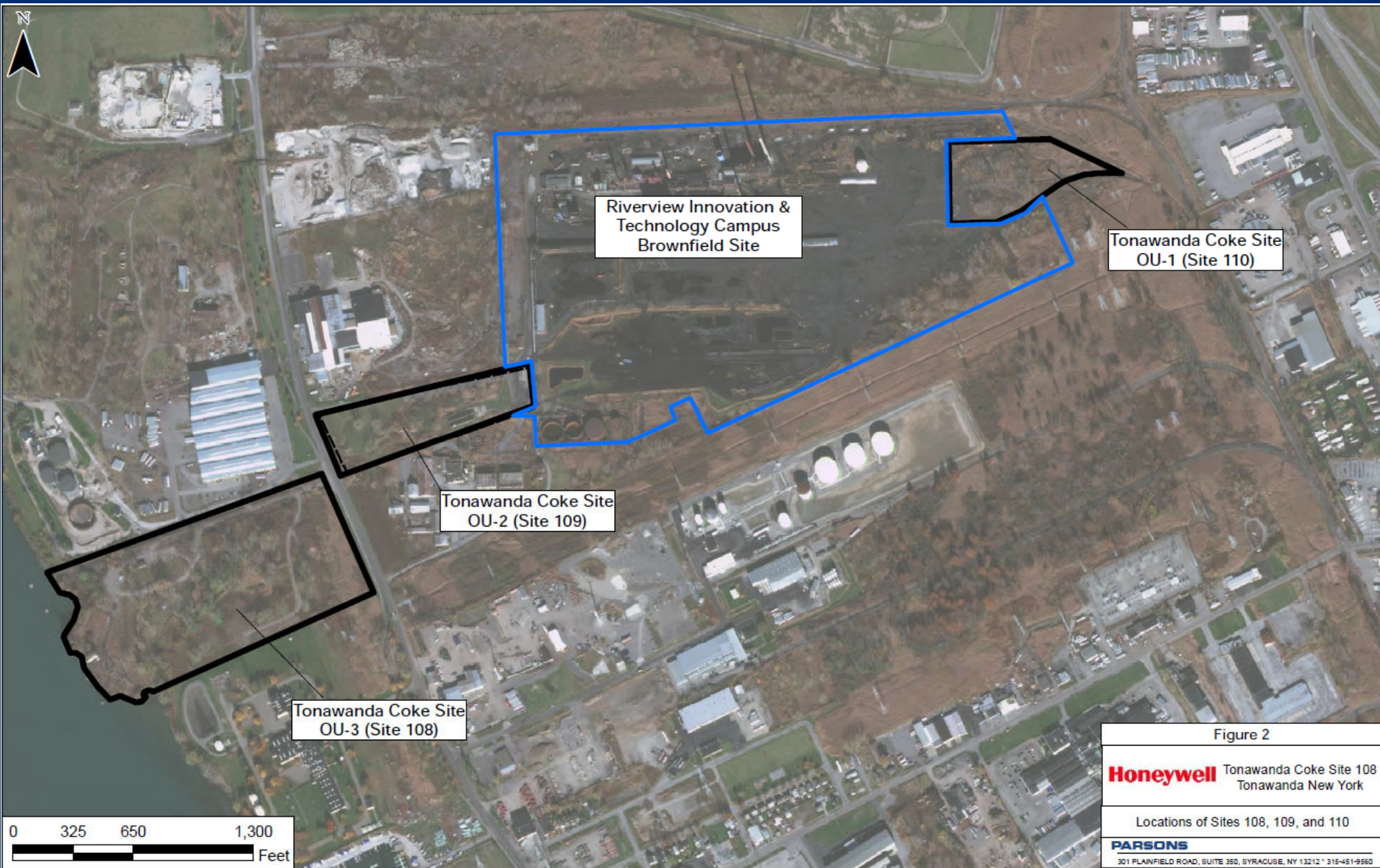


Figure 2

Honeywell Tonawanda Coke Site 108
Tonawanda New York

Locations of Sites 108, 109, and 110

PARSONS

301 PLAINFIELD ROAD, SUITE 350, SYRACUSE, NY 13212 • 315-451-9560

Site 109 Overview

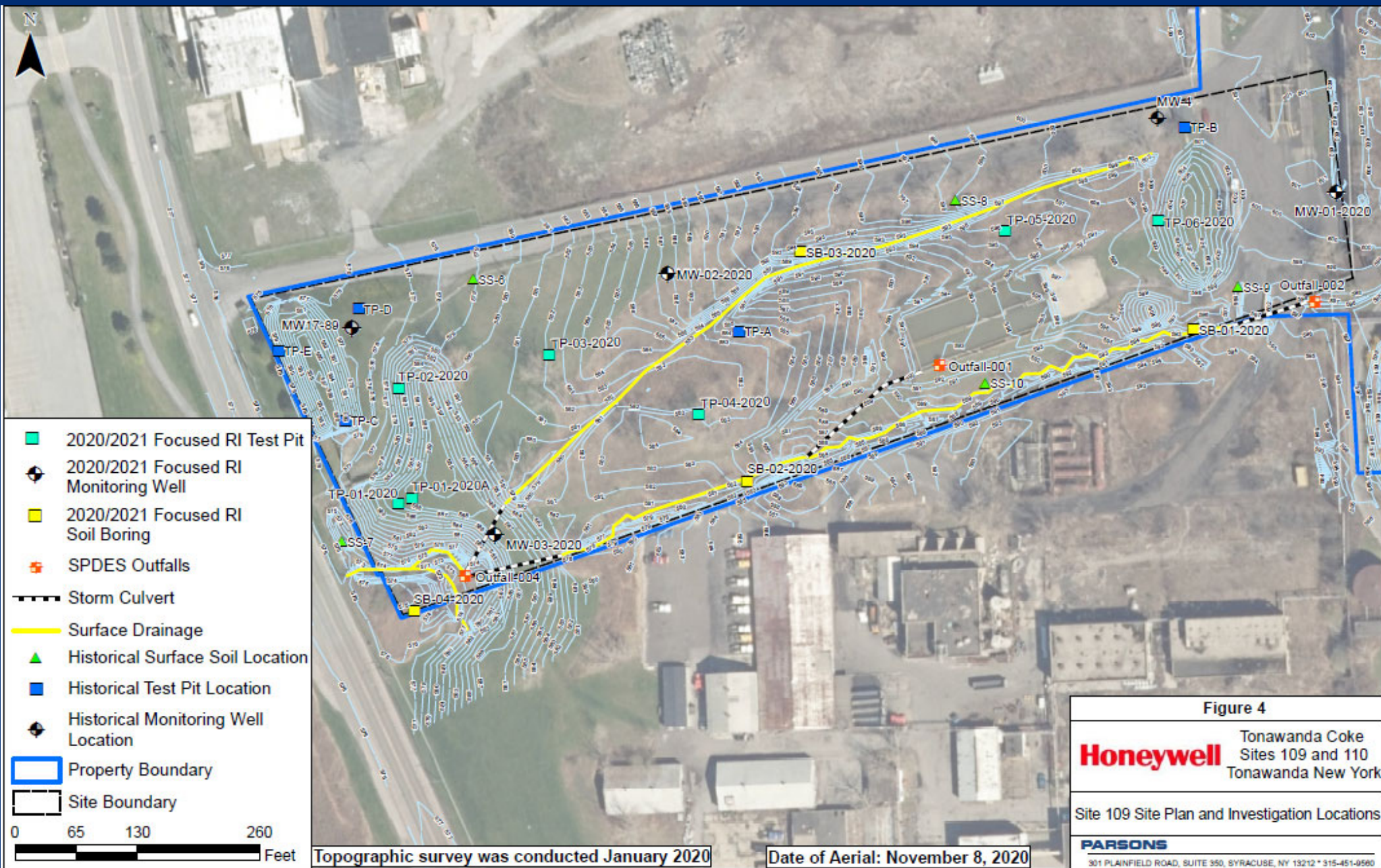
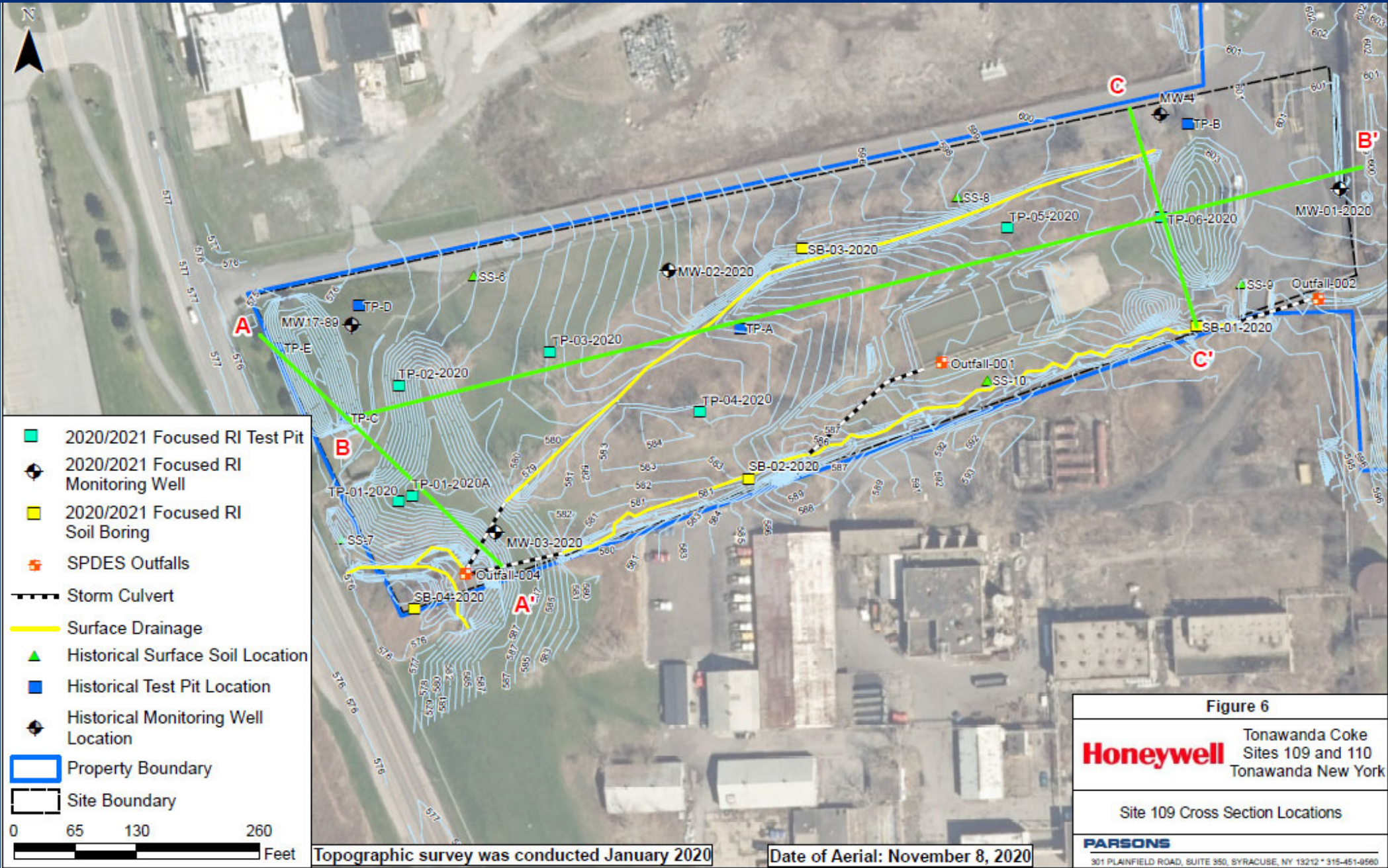
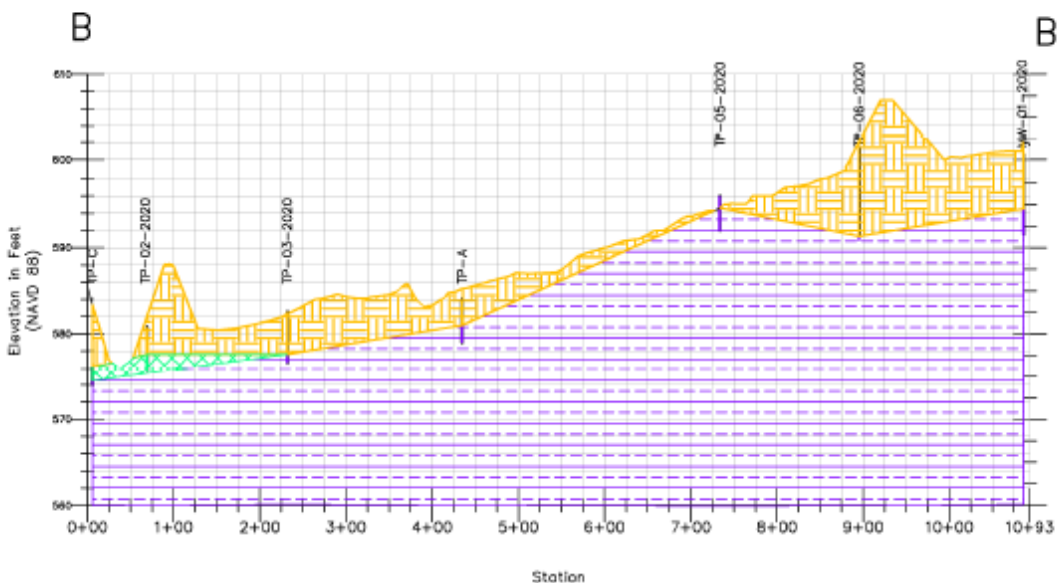
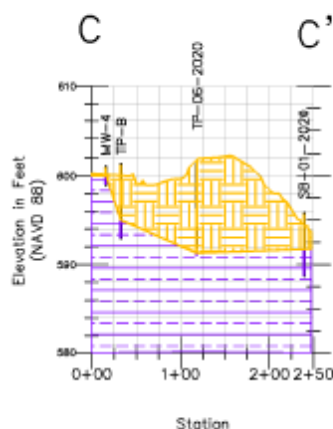
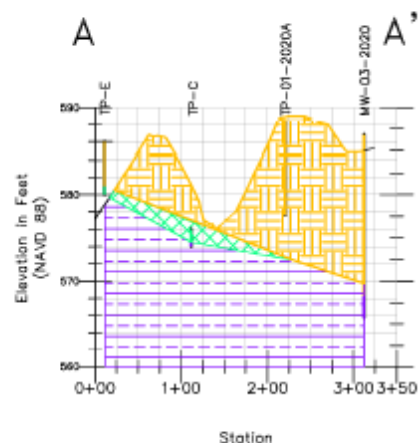


Figure 4
Honeywell Tonawanda Coke Sites 109 and 110
 Tonawanda New York
 Site 109 Site Plan and Investigation Locations
PARSONS
 301 PLAINFIELD ROAD, SUITE 350, SYRACUSE, NY 13212 * 315-451-0580

Site 109 Cross Sections



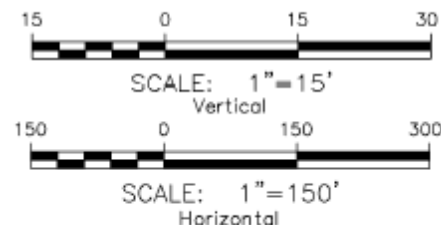
Site 109 Cross Sections



NOTE:

1. EXISTING GRADE FROM SITE SURVEY PERFORMED JANUARY 2020.
2. DISCREPANCIES IN GROUND SURFACE AT 2020/2021 FOCUSED RI INVESTIGATION (LOCATIONS ENDING IN -2020 OR -2021) ARE DUE TO LOCATIONS BEING OFFSET SLIGHTLY FROM THE TRANSECT. DISCREPANCIES IN GROUND SURFACE AT HISTORICAL LOCATIONS ARE DUE TO LOCATIONS BEING OFFSET FROM THE TRANSECT, AS WELL AS POTENTIAL INACCURACIES IN HISTORICAL SURVEY DATA.

- LEGEND:**
- SD-05-2020 SAMPLE ID
 - EXISTING GRADE (NOTE 1)
 - FILL
 - GRAY CLAY
 - REDDISH BROWN CLAY



Vertical Exaggeration 10X

Figure 8

Honeywell
Tonawanda Coke
Sites 109 and 110
Tonawanda, New York

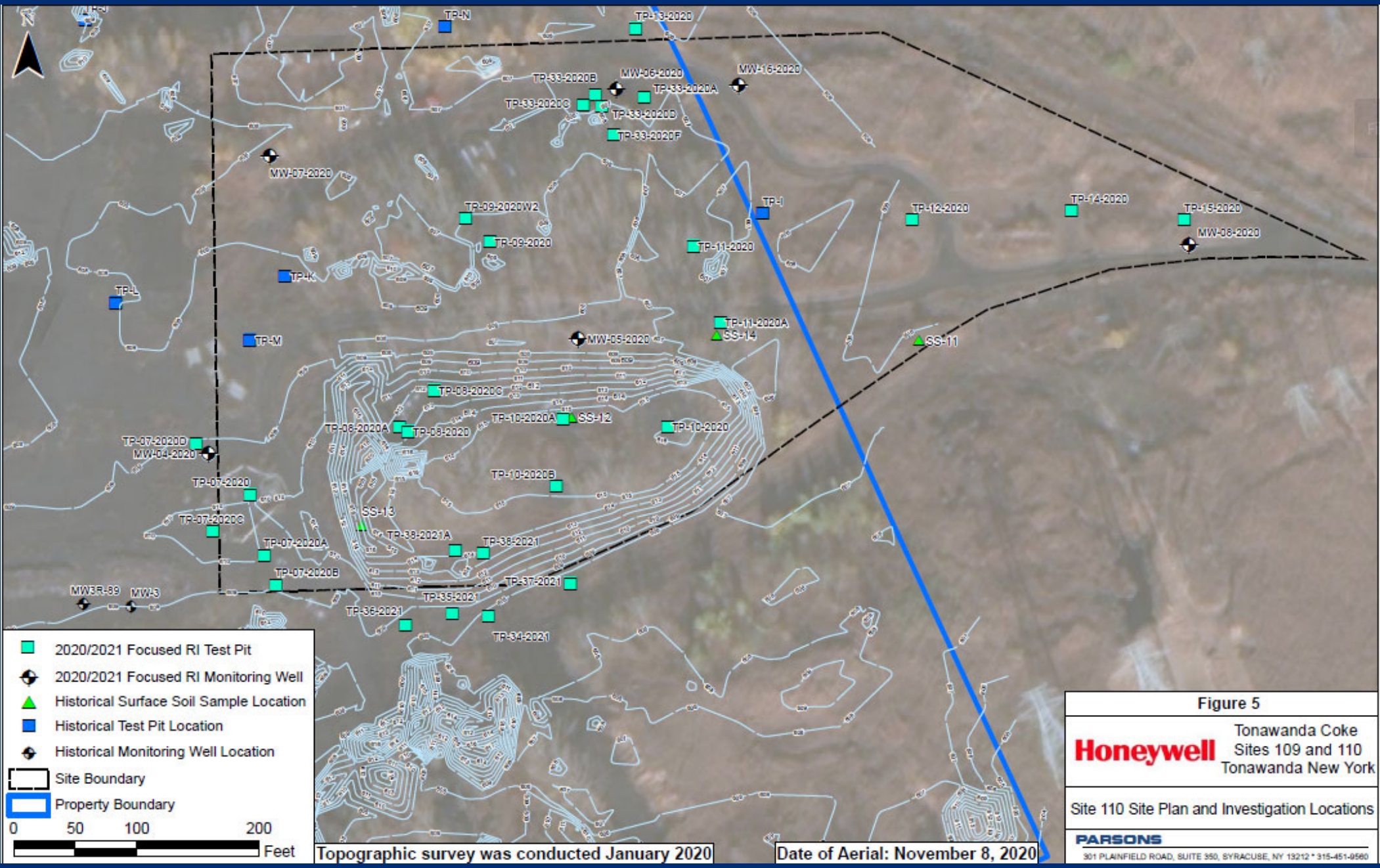
Site 109 Geologic Cross Sections

PARSONS
301 PLANFIELD ROAD, SUITE 350, SYRACUSE, NY 13212 • 315-451-9560

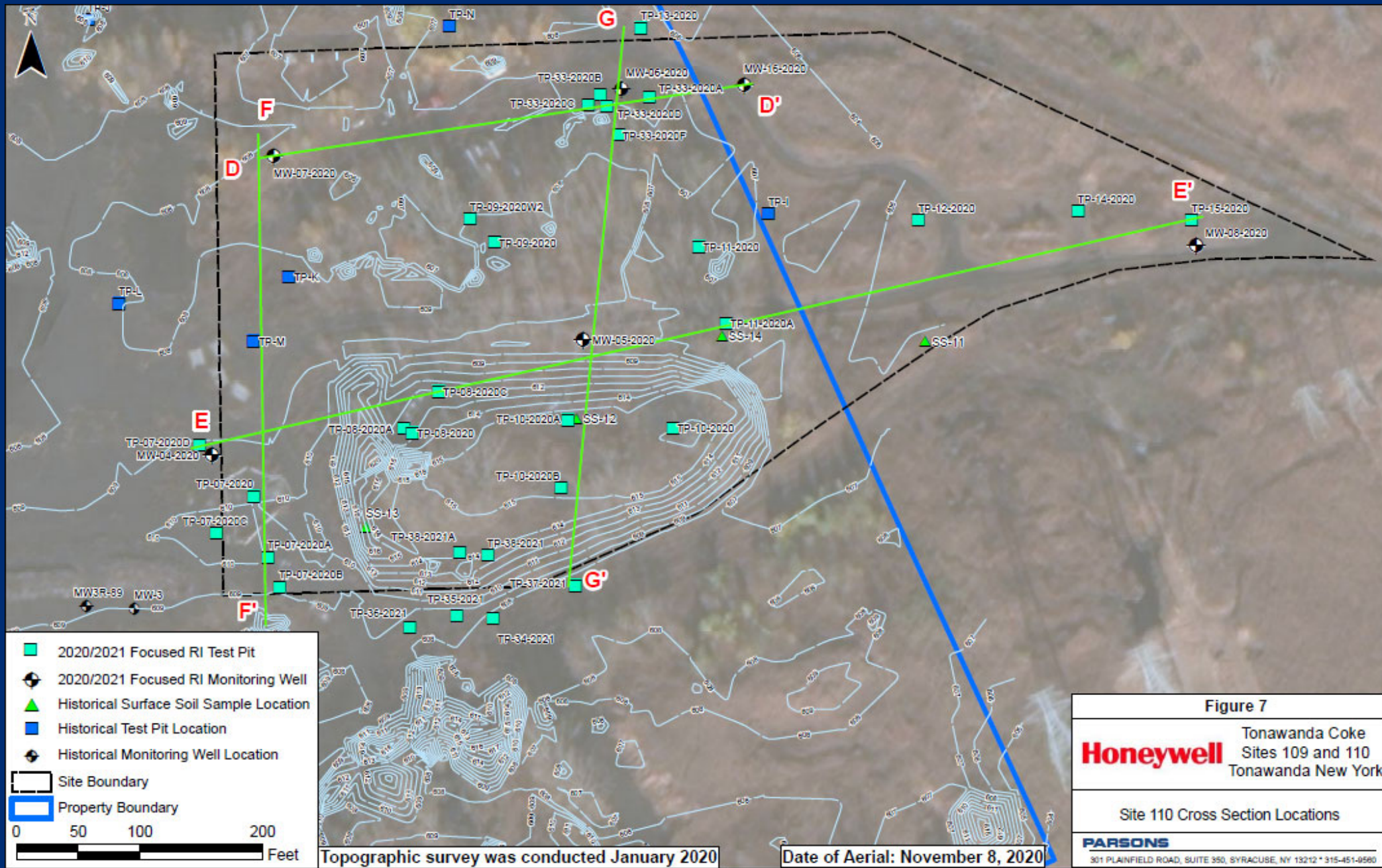
Site 109 Shallow Groundwater



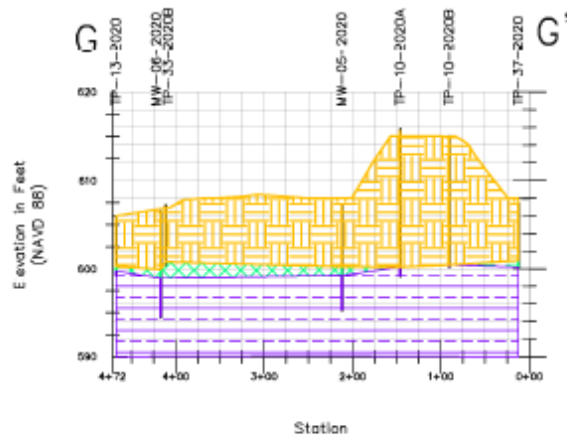
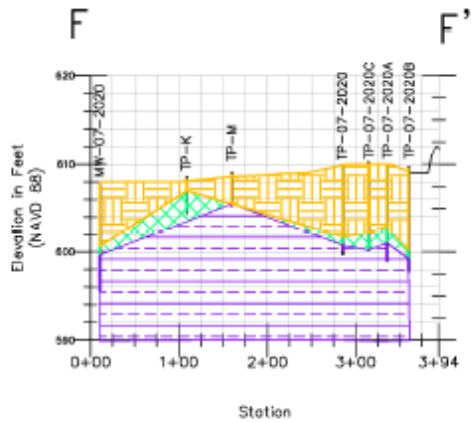
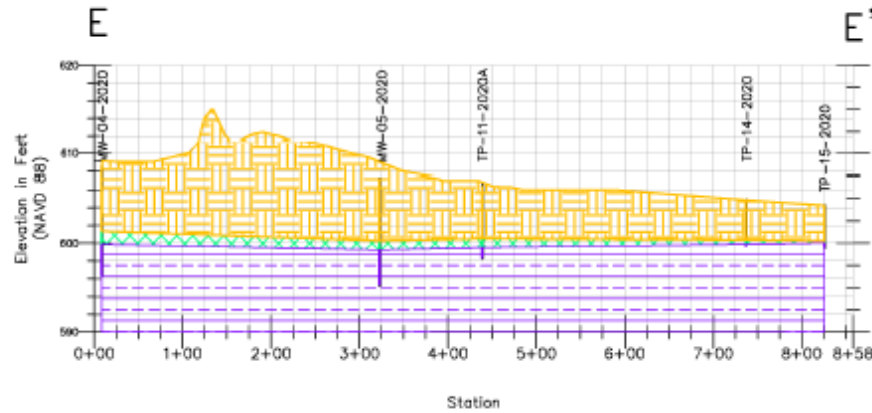
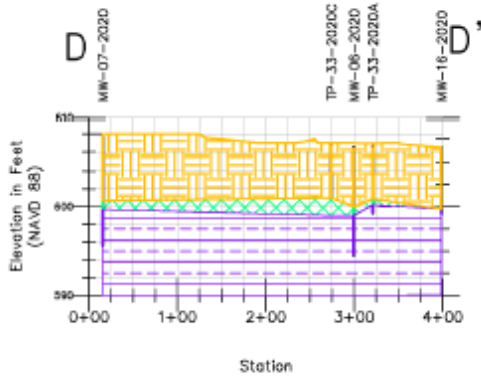
Site 110 Overview



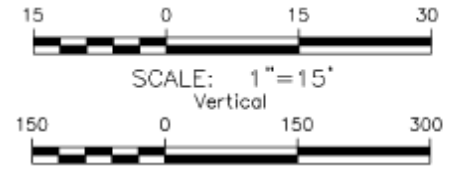
Site 110 Cross Sections



Site 110 Cross Sections



- LEGEND:
- SD-05-2020 SAMPLE ID
 - EXISTING GRADE (NOTE 1)
 - FILL
 - GRAY CLAY
 - REDDISH BROWN CLAY



Vertical Exaggeration 10X

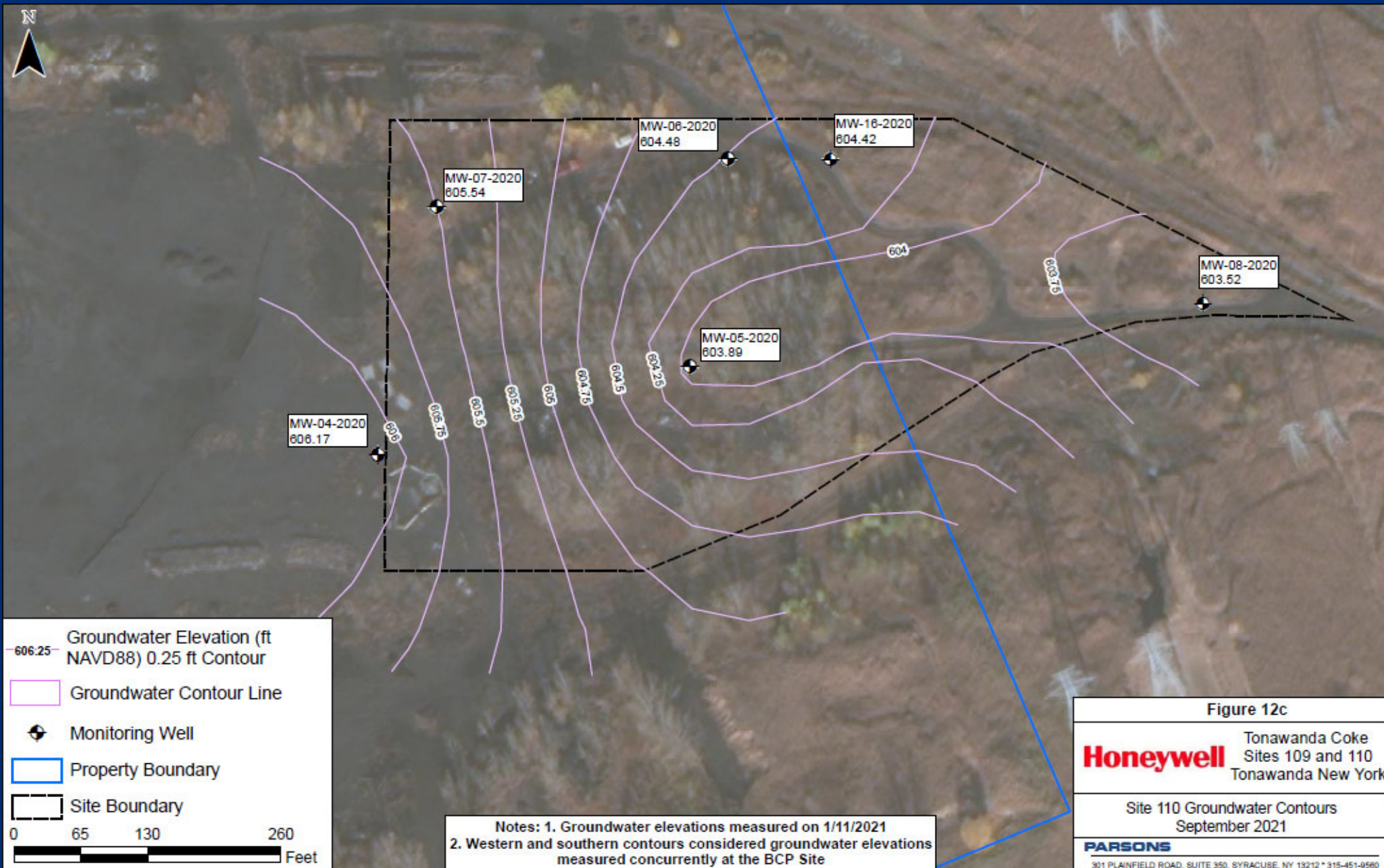
Figure 9

Honeywell	Tonawanda Lake Sites 109 and 110 Tonawanda, New York
	Site 110 Geologic Cross Sections
PARSONS	
301 PLAINFIELD ROAD, SUITE 300, SYRACUSE, NY 13212 • 315-451-9560	

NOTE:

1. EXISTING GRADE FROM SITE SURVEY PERFORMED JANUARY 2020.
2. DISCREPANCIES IN GROUND SURFACE AT 2020/2021 FOCUSED RI INVESTIGATION (LOCATIONS ENDING IN -2020 OR -2021) ARE DUE TO LOCATIONS BEING OFFSET SLIGHTLY FROM THE TRANSECT. DISCREPANCIES IN GROUND SURFACE AT HISTORICAL LOCATIONS ARE DUE TO LOCATIONS BEING OFFSET FROM THE TRANSECT, AS WELL AS POTENTIAL INACCURACIES IN HISTORICAL SURVEY DATA.

Site 110 Shallow Groundwater



Thank You

NYSDEC Project Manager:

Benjamin McPherson
270 Michigan Avenue
Buffalo, NY 14203
(716) 851-7220
benjamin.mcpherson@dec.ny.gov

USEPA:

Michael Basile
Basile.Michael@epa.gov

NYSDOH Project Manager:

Angela Martin
Bureau of Environmental
Exposure Investigation
Corning Tower, Room 1787
Albany, NY 12237
(518) 473-4671
bee@health.ny.gov